



## SOUTH BURLINGTON HIGH SCHOOL

"BUILDING A PROUD TRADITION"

### PROFILE 2009-2010

550 Dorset Street  
South Burlington, Vermont 05403  
Guidance Office phone 802-652-7060  
fax 802-652-7371  
<http://sbhs.sbschools.net>  
CEEB Code: 460413

Tim Wile, Guidance Director  
Karen R. Grace, School Counselor  
Nikki St. Mary, School Counselor  
Halina Gangi, School Counselor  
Chuck Soule, School Counselor  
Peg Adams, Registrar/College Visit Coordinator  
Debbie DeCarli, Administrative Assistant  
Patrick Burke, Principal  
Patrick Phillips, Assistant Principal  
Lissa McDonald, Administrative Dean

### THE COMMUNITY

South Burlington is a city of approximately 17,800 residents located near Lake Champlain in the northwestern part of the state. The city is a suburban community situated in the state's urban core. While many of the residents are employed by IBM, Fletcher Allen Health Care, and local colleges and universities, South Burlington is socio-economically and, increasingly, culturally diverse.

### THE SCHOOL

South Burlington High School is a comprehensive high school with an enrollment of approximately 930 students in grades 9-12. The school presently offers accelerated and honors programs in English, social studies, mathematics, world language, technology and science. Approximately 6% of SBHS students are currently enrolled in courses at area technical centers.

### ACCREDITATION

South Burlington High School is accredited by the New England Association of Schools and Colleges, Inc. and by the Vermont State Department of Education.

### COLLEGE PLACEMENT

Approximately 72% of our students will continue their education following graduation.

### NATIONAL MERIT PROGRAM DISTINCTIONS

For the 2008-2009 school year, 5 students received a Certificate of Merit and 9 students received Letters of Commendation.

### GRADUATION REQUIREMENTS

The completion of a minimum of 20 credits is required for graduation. (The class of '09 earned an average of 26.31 credits). Requirements include:

**English**-4 credits  
**Social Studies**-3 credits  
**Mathematics**-3 credits  
**Science**-3 credits  
**Information Technology**-.5 credit  
**Fine Arts**-1 credit  
**Health**-.5 credit  
**Physical Education**-1.5 credits

### ACADEMIC INFORMATION

South Burlington High School does not compute class rank.

Honors distinctions at graduation are based on the following:

**Summa Cum Laude** = GPA of 4.1-4.33

**Magna Cum Laude** = GPA of 3.8-4.0

**Cum Laude** = GPA of 3.5-3.7

**All courses are given equal weight in computing GPA.** The student's grade is given point values according to the following scale. Courses with different credit values (e.g. lab sciences are 1.5 credits) use the same ratio as this scale.

<u>GRADE</u>	<u>RANGE</u>	<u>PLUS/MINUS</u>
A+	97-100	4.33
A	93-96	4.00
A-	90-92	3.67
B+	87-89	3.33
B	83-86	3.00
B-	80-82	2.67
C+	77-79	2.33
C	73-76	2.00
C-	70-72	1.67
D+	67-69	1.33
D	63-66	1.00
D-	60-62	0.67
F	Below 60	0.00
P	PASS	
I	INCOMPLETE/NO GRADE	
M	MEDICAL	
AU	AUDIT	

**MEAN GPA FOR CLASS OF '09:** 2.969

### DEFINITION OF COURSE LEVELS

Most challenging: AP, Accelerated (ACC) and Honors (HON)

Challenging: Level 1 (L-1)

Less challenging: Level 2 (L-2)

Where applicable, the level is indicated on transcripts. Most English, social studies and world language classes are heterogeneously grouped. **Advanced Placement (AP)** courses, available to juniors and seniors, are taught in French, Spanish, English, European history, US government and politics, calculus, statistics, biology, chemistry, environmental science, physics, computer science, and music theory. For course descriptions refer to The SBHS Programs of Study, available online in the Resources section of <http://sbhs.sbschools.net>

## AP SCORES FOR 2008-09

YEAR	Total # of Students	Total # of Tests	%Earning Scores of 3	% Earning Scores of 4	% Earning Scores of 5
2009	182	350	27	24	16

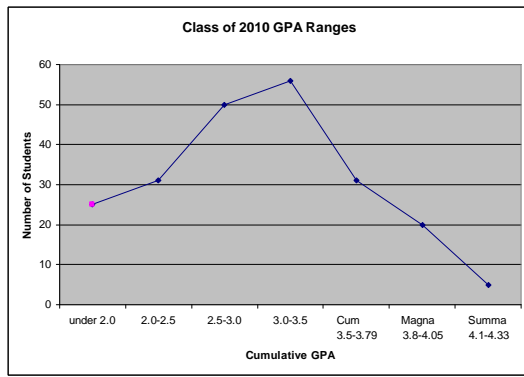
All students enrolled in AP classes are required to take the exam.

## SAT MEAN SCORES FOR 2008-09

	READING	MATH	WRITING
SO. BURLINGTON	544	556	534
VERMONT	518	518	506
UNITED STATES	501	515	493

## AVE. ACT COMPOSITE SCORES FOR 2008-09

SO. BURLINGTON	25.3
VERMONT	23.1
UNITED STATES	21.1



Data based on 6 semesters for 213 students in the class of '10

## CO-CURRICULAR ACTIVITIES & CLUBS

South Burlington High School offers a wide range of co-curricular activities: Art Club, Close-Up, Coalition for Community Service, Coffee House, Drama, French Club, Future Educators of America, Gay/Straight Alliance, The Green Team, Interscholastic and Intramural Activities, Habitat for Humanity, Key Club, Math League, Multi-Media Club, National Honor Society, Oceanography Club, Ping Pong Club, Rowing Club, Rugby Club, S.A.D.D. Club, Scholars' Bowl, Speech Club, Strength/Conditioning Club, Student Council, Ultimate Frisbee, Unified Sports.

## SPECIAL PROGRAMS

- **The Career Development Center (CDC)** places students in work settings for shadowing, mentoring and internships, and in peer tutoring and other volunteer opportunities.
- An active student exchange program (**TIE**) is held with students from France, Germany, Japan and Spain, and there are service-learning trips (e.g. with Habitat for Humanity) throughout the year.
- **The Progressive and LEAP Programs** meet the needs of students best served in a small, non-traditional setting.
- **Peer Leadership II** – 12th graders take a leadership seminar and facilitate a 9<sup>th</sup> grade advisory (SLAM) that helps freshmen with the transition to high school.
- **IDP** - This contract based program serves older students working to complete their outstanding graduation requirements (3 or fewer credits needed to graduate).
- **High School Completion Program (HC)** promotes community and competency based learning in coordination with Vermont Adult Learning.
- **Big Picture** is an experiential, internship based program.

## STUDENTS FROM THE CLASS OF 2009 APPLIED TO AND WERE ACCEPTED AT THE FOLLOWING INSTITUTIONS:

Academy of Art University	Dickinson College	University of Massachusetts, Amherst	Saint Anselm College
Alfred University	Drexel University	University of Massachusetts, Lowell	Saint Michael's College
American International College	Earlham College	McGill University	Salem State College
American University	East Carolina University	Meredith College	Salve Regina University
Arizona State University	Eckerd College	Merrimack College	The University of Scranton
The University of Arizona	Elon University	University of Miami	Seminole Community College
Assumption College	Emmanuel College	University of Michigan	Simmons College
Bard College	Fashion Institute of Technology	Middlebury College	Skidmore College
Bay Path College	Fisher College	Montana State University, Bozeman	Smith College
Beloit College	Florida Institute of Technology	Mount Holyoke College	University of South Carolina
Binghamton University	Fordham University	University of New England	University of Southern California
Boston College	Franklin Pierce University	New Hampshire Institute of Art	University of Southern Maine
Boston University	Full Sail University	University of New Hampshire	Southern New Hampshire University
Bradley University	George Mason University	New Mexico State University	College of St. Joseph
Brown University	The George Washington University	New York City College of Technology	St. Lawrence University
Bryant University	Goucher College	New York University	State University of New York at Albany
Bucknell University	Grinnell College	The University of North Carolina at Chapel Hill	Stetson University
Burlington College	University of Guelph	University of North Carolina at Greensboro	Stonehill College
Carnegie Mellon University	Guilford College	University of North Carolina at Wilmington	Stony Brook University
Case Western Reserve University	Harvard University	University of North Carolina School of the Arts	Suffolk University
Castleton State College	Hobart and William Smith Colleges	North Carolina State University	SUNY College of Technology at Canton
The Catholic University of America	Hofstra University	Northeastern University	Susquehanna University
University of Central Florida	Humboldt State University	Northwestern University	Syracuse University
Champlain College	Ithaca College	Norwich University	The University of Tampa
College of Charleston	James Madison University	The Ohio State University	Texas Tech University
University of Chicago	Johnson & Wales University	Ohio Wesleyan University	Trinity College
Clark University	Johnson State College	Pennsylvania State University, University Park	Tufts University
Clarkson University	Keene State College	University of Pennsylvania	Tulane University
Clemson University	Kenyon College	Plattsburgh State University	University at Buffalo, SUNY
Colby College	Kettering University	Plymouth State University	Ursinus College
Colby-Sawyer College	La Salle University	University of Portland	Vassar College
University of Colorado at Boulder	Lafayette College	Purdue University	Vermont Technical College
Colorado State University	Lasell College	Queens University	University of Vermont
Columbia College	Lehigh University	Quinnipiac University	Villanova University
Community College of Vermont	Lyndon State College	Rensselaer Polytechnic Institute	Virginia Polytechnic Institute
Connecticut College	Maine College of Art	University of Rhode Island	Warren Wilson College
University of Connecticut	Maine Maritime Academy	University of Richmond	Washington State University
Cornell College	University of Maine	Rivier College	Washington University in St. Louis
Cornell University	Manhattan College	Rochester Institute of Technology	University of Western Ontario
Curry College	Marist College	University of Rochester	Western Washington University
Dartmouth College	Marshall University	Roger Williams University	University of Wisconsin, Madison
Daytona State College	Maryland Institute College of Art	Rollins College	Wittenberg University
DePaul University	Massachusetts College of Art	Sacred Heart University	Worcester Polytechnic Institute

